

MORWENNA-3002

RORO-Pontoon



MORWENNA
Shipping Company

- Barges • Pusher & Towing Tugs • All kinds of towages •
- Heavy Lift & OOG Shipments • Technical management •

www.mwship.com

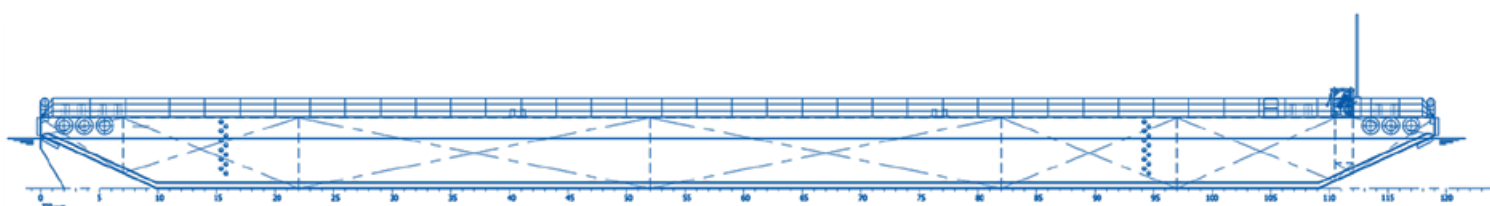
MORWENNA-3002 • RORO PONTON



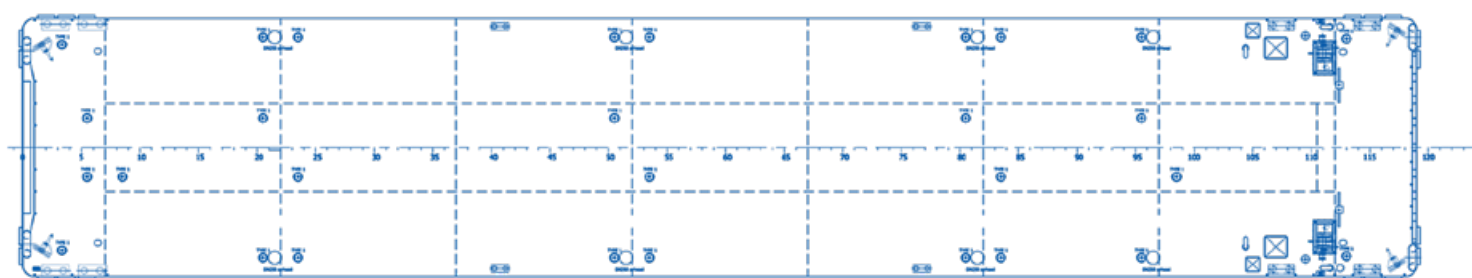
CLASS:

RINA, C  HULL, Pontoon, Unrestricted navigation,
STRENGTHBOTTOM, INWATERSURVEY | Ice Class: IC

IMO / FLAG:	LENGTH OVERALL:	DRAFT:
9874533 / Russia	89,25 m	0,80 m / 3,00 m
PLACE OF BUILD:	BEAM:	CARRYING LOAD:
Police, Poland	16,50 m	3000 t
YEAR OF BUILD:	DEPTH:	DECK LOAD:
2019	4,50 m	15 t/m ²

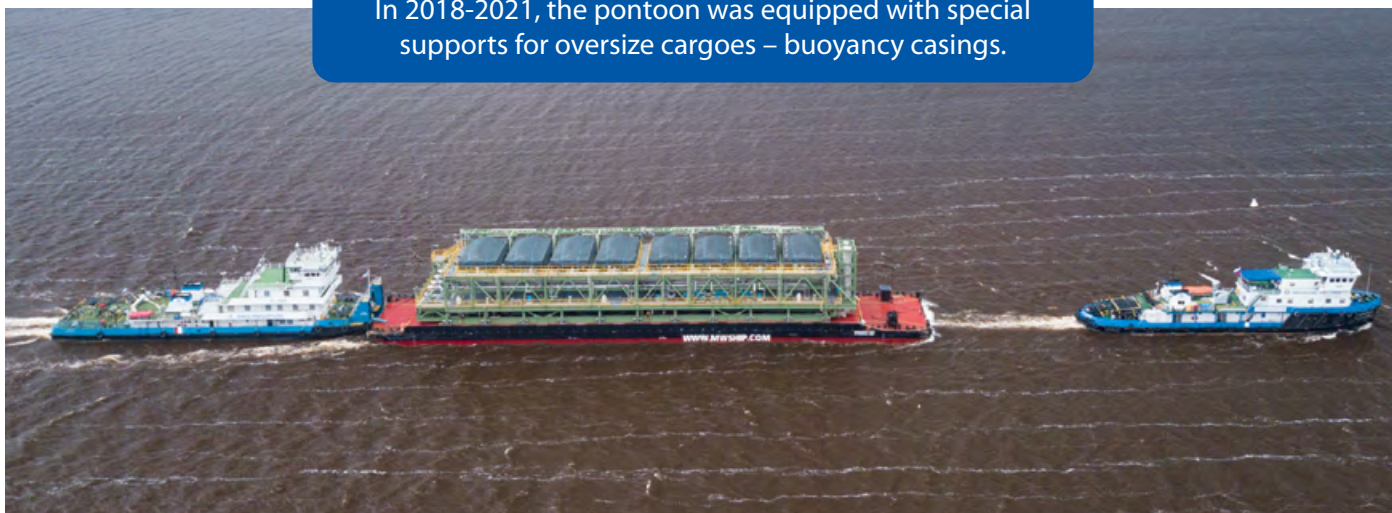


Side view



Top view

The pontoon can be modernized to meet the project goals.
In 2018-2021, the pontoon was equipped with special
supports for oversize cargoes – buoyancy casings.



DIMENSIONS

CARGO DECK AREA:	1150 m ² (L=77,10 m x W=14,90 m)
DECK THICKNESS:	17,00 mm extra heavy deck
TONNAGES (GROSS/NET):	1924 GRT / 577 NRT
LIGHT SHIP DRAFT (BOW):	0,80 m
DRAFT MAX:	3,00 m

DESIGN CONDITIONS

SEA WATER TEMPERATURE:	From -05° C to +35° C
ENV. TEMPERATURE AIR:	Fom -05° C to +45° C



DECK LAYOUT

TOWING BRACKETS:	1x on PS and 1x on SB at fore and aft deck
BOLLARDS:	8x standard, insert plates at every section
DRAUGHT MARKS:	At fore, midship and aft on PS and SB every 20 cm
BOARDING LADDERS:	2x on SB and 2x on PS in recesses of the hull
CATHODIC PROTECTION:	Zinc anodes on underwater part of the hull
MANHOLES:	Flush bolted manholes
ENTRY / ESCAPE:	Gas-spring hatch on coming and easy escape manhole for pump room and BWTU
HATCHES:	Both pump room and lashing store have a large flush-bolted hatch
RAMP RECESS:	At the fore — 12,00 m wide for the 8x 1,50 ramp, At the stern — 8,00 m wide stacking platforms
ANCHOR / MOORING SYSTEM:	2x electric driven anchor / mooring winches are equipped with mooring lines, anchor and chains
MASTS:	For solar powered navigation lights
FENDERING:	Tyre fender system
RAILING:	Removable stanchions with wire guard rails
TOWING ARRANGEMENT:	Chains, towing bridle and emergency wire
NAVIGATION:	From rechargeable batteries 24 V, charging from solar panels

BALLAST SYSTEM

BALLAST PUMP:	3x Azcue 400,00 m ³ /h ballast pumps
BALLAST PIPES AND VALVES:	Ballast line DN 200 is provided
BALLAST TANKS:	17x 5,55 m ³
VALVE OPERATION:	Manually operated from pumproom
DE-AERATION:	Automatic air cap on each ballast tank
BALLAST WATER TREATMENT UNIT:	BIO SEA B04-0500, up to 500,00 m ³ /h

ARRANGEMENTS

PUMP ROOM:	At SB, the pump room with manifold
LASHING STORE:	At PS, also for equipment brackets storage
SAFETY:	All spaces are provided with double exits
LIFE SAVING:	2x lifebuoys
FIFI:	2x fire extinguishers

TUGS & AHTS • 740 – 23 500 H.P. • 28 UNITS



LIFTING
WHEELHOUSE

3450 H.P.

Multipurpose AHTS • Ice class IC



4465 H.P.

Multipurpose AHTS • Ice class IA



4896 H.P.

Multipurpose AHTS • Ice class IA



DP2 AVAILABLE

23500 H.P.

Multipurpose AHTS



2230 H.P.

Multipurpose AHTS • Ice Class ICE



2416 H.P.

Multipurpose AHTS • Ice Class IC



760 H.P.

Pusher Tug RT-600 Type • Ice Class (Ice 10)A



930-1224 H.P.

Pusher Tugs BTO Type • Ice Class (Ice 30)A



1400 H.P.

Tugs MB Type • Ice Class IC



2000 H.P.

Pusher Tug OT-2000 Type • Ice Class IC



2400 H.P.

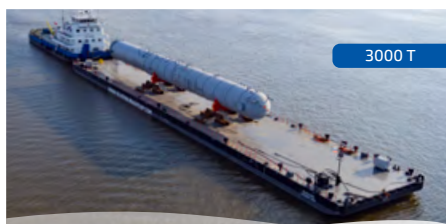
Pusher Tugs OT-2400 Type • Ice Class (Ice 20)A



800 H.P.

Pusher Tug OTA-800 Type • Ice Class (Ice 20)

RORO BARGES & FLAT TOP PONTOONS • 2000 – 4600 T CAPACITY • 32 UNITS



3000 T

RORO-pontoons 8916 Project • Ice Class IC



4963-5500 T

RORO-pontoons 9516 Type • Ice Class ICE



3360 T

Flat-top barges 03060 Project • Ice Class



2040 T

Flat-top barges ME2010 Project • Ice Class



2200 T

RORO-pontoons 16801 Project • Ice Class



ALSO FOR LOW-VISCOSITY
OIL & DIESEL OIL

2032 T / 2200 M³

Chemical / Methanol Barge • Ice Class



Morwenna Shipping company LTD.

www.mwship.com

✉ chartering@mwshipco.com

☎ +7 (495) 151-85-20