

# SILVER-3004

RORO-Pontoon



**MORWENNA**  
Shipping Company

- Barges • Pusher & Towing Tugs • Towages of all types •
- Heavy-lift and outsize cargo shipment •
- Technical management •

[www.mwship.com](http://www.mwship.com)

# SILVER-3004 • RORO PONTON

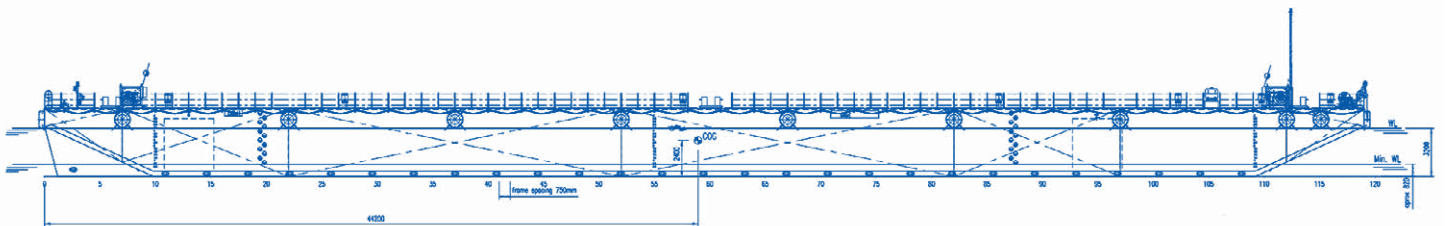
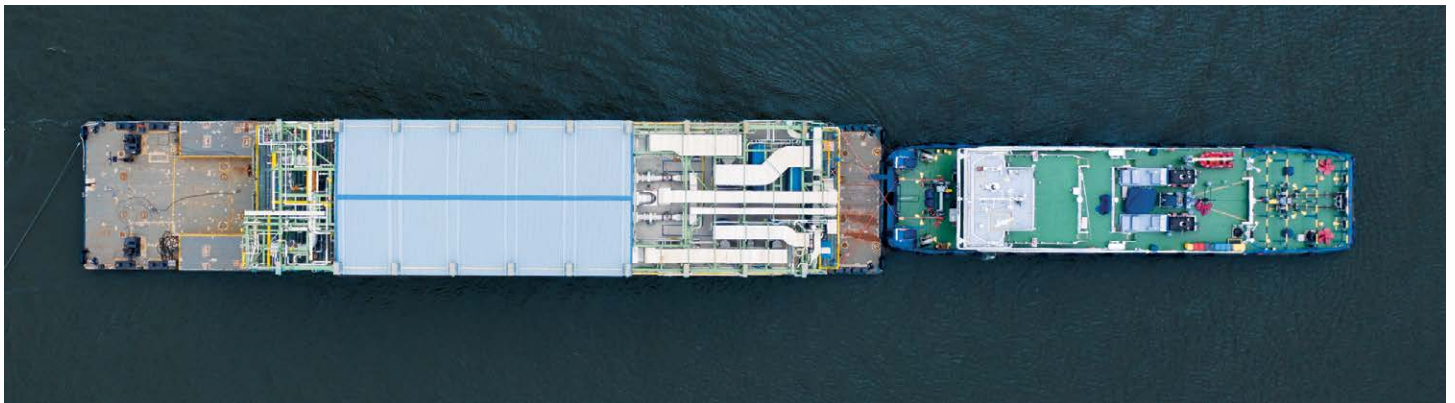
YEAR OF BUILD: 2015	DEPTH: 4,50 m
PLACE OF BUILD: China, Changde	DRAFT: 0,80 m / 3,00 m
LENGTH OVERALL: 85,67 m	CARRYING LOAD: 3000 t
BEAM: 16,50 m	DECK LOAD: 15 t/m <sup>2</sup>



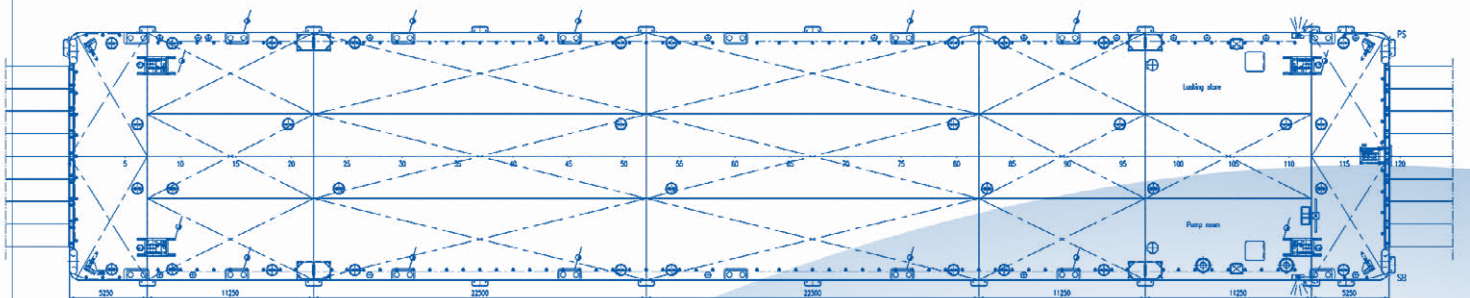
CLASS:

RINA, C  $\boxtimes$  HULL, Pontoon, Unrestricted navigation, STRENGTHBOTTOM, INWATERSURVEY | Ice Class: IC

• Project 8916 • Damen Stan Pontoon •



Side view



Top view



## DIMENSIONS

DECK THICKNESS:	17,00 mm extra heavy deck
TONNAGES (GROSS/NET):	1917 r.t / 575 r.t
WIDTH WITH SUPERSTRUCTURE - BUOYANCY CASINGS:	8,66 m
DEPTH INCLUDING SUPERSTRUCTURE - BUOYANCY CASINGS:	5,70 m

## DESIGN CONDITIONS

SEA WATER TEMPERATURE:	from -05° C to +35° C
ENVIRONMENTAL TEMPERATURE AIR:	from -05° C to +45° C

## BALLAST SYSTEM

BALLAST PUMP:	3x Azcue 400,00 m <sup>3</sup> /h ballast pumps
BALLAST PIPES AND VALVES:	ballast line DN 200 is provided
BALLAST TANKS:	17x 6,89 m <sup>3</sup>
VALVE OPERATION:	manually operated from pumproom
DE-AERATION:	automatic air cap on each ballast tank
BALLAST WATER TREATMENT UNIT:	BIO SEA B03-0450, up to 450,00 m <sup>3</sup> /h

## ARRANGEMENTS

PUMP ROOM:	on starboard the pump room with manifold is located
LASHING STORE:	on portside a lashing store is located for storing equipment
SAFETY:	all spaces are provided with double exits
LIFE SAVING:	2x lifebuoys
FIFI:	2x fire extinguishers

## DECK LAYOUT

TOWING BRACKETS:	1x on PS and 1x on SB at fore and aft deck
BOLLARDS:	8 pcs standard, insert plates at every section
DRAUGHT MARKS:	at fore, midship and aft on PS and SB every 20 cm
BOARDING LADDERS:	2x on SB and 2x on PS in recesses of the hull
CATHODIC PROTECTION:	zinc anodes on underwater part of the hull
MANHOLES:	flush bolted manholes
ENTRY / ESCAPE:	gas-spring hatch on coming and easy escape manhole for pump room and lashing store
HATCHES:	both pump room and lashing store have a large flush-bolted hatch
RAMP RECESS:	ramp mounting niche RORO loading on the tank and at the stern 12 m wide under the ramp 8x 1,5
ANCHOR / MOORING SYSTEM:	2x electric driven anchor / mooring winches are equipped with mooring lines, anchor and chains
MASTS:	for solar powered navigation lights
FENDERING:	tyre fender system
RAILING:	removable stanchions with wire guard rails
TOWING ARRANGEMENT:	chains, towing bridle and emergency wire
NAVIGATION:	from rechargeable batteries 24 V, charging from solar panels



More than 40 fleet units:

### KPT2500-1C PUSHER TUG

NEWBUILT



3 units  
Multipurpose AHT, Supply Vessels with Ice class 1A

### MB

Project 07521



3 units  
Tugs with Ice Class IC

### RT-600

Project 1741AM



1 unit  
Pusher Tug with Ice Class (Ice 10)A

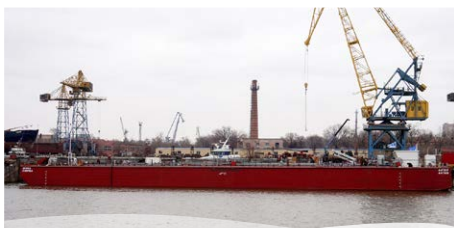
### OT-2000

Project 428.1



1 unit  
Pusher Tug with Ice Class IC

### CHEMBA



1 unit  
Methanol barge

### RORO-PONTOON 6516

Project 6516



1 unit  
RORO-pontoon with Ice Class IC

### ARCTIC



1 unit  
Multipurpose AHT, Supply Vessel with Ice class 1A

### SILVER LOWENNA



1 unit  
Multipurpose AHT with Ice Class ICE

### BTO

Project 81200



3 units  
Pusher Tugs with Ice Class (Ice 30)A

### OT-2400

Project N-3290/3291



8 units  
Pusher Tugs with Ice Class (Ice 20)A

### RORO-PONTOONS

Project 8916



11 units  
RORO-pontoons with Ice Class IC

### RORO-PONTOON GRPN

Project 8516



1 unit  
RORO-pontoon with Ice Class 3

### IEVOLI ORANGE



1 unit  
Multipurpose AHT, Supply Vessel with Ice class 1A

### SOWENA



1 unit  
Multipurpose AHT with Ice Class ICE

### OZERNY

Project N-3180



1 unit  
Pusher Tug with Ice Class IC

### OTA-800

Project 758AM



1 unit  
Pusher Tug with Ice Class (Ice 20)

### RORO-PONTOONS SIMMAR

Project 9516



2 units  
RORO-pontoons with Ice Class ICE

### RORO-PONTOONS 16801



3 units  
RORO-pontoons

@morwennashipping

See all of our fleet on website: [WWW.MWSHIP.COM](http://WWW.MWSHIP.COM)

TEL.: +7 (495) 151-85-20

E-MAIL: [chartering@mwship.com](mailto:chartering@mwship.com)

HEAD Office №20018, Golovinskoe shosse 5-1,  
OFFICE: business center «Vodny», Moscow, 125212, Russia

Morwenna Shipping company LTD.

