

# SIMMAR SUN

RO-RO pontoon



**MORWENNA**  
Shipping Company

- Barges • Pusher & Towing Tugs • Towages of all types •
- Heavy-lift and outsize cargo shipment •
- Technical management •

[www.mwship.com](http://www.mwship.com)

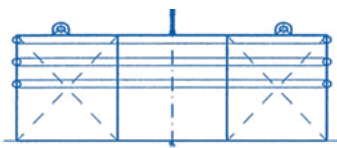
# SIMMAR SUN • RORO-PONTOON

YEAR OF BUILD: 2010	DEPTH: 6,00 m
PLACE OF BUILD: Turkey, Tuzla	DRAFT: 0,97 m / 4,66 m
LENGTH: 95,00 m	GROSS TONNAGE: 2500 t
BREADTH: 16,00 m	DECK LOAD: 10 t/m <sup>2</sup>

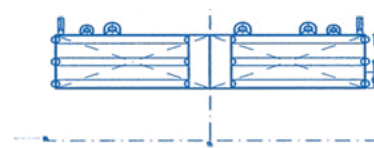


CLASS:  
RINA, C ❖ Transportation barges, Unrestricted Navigation | Ice Class: ICE 3 grade

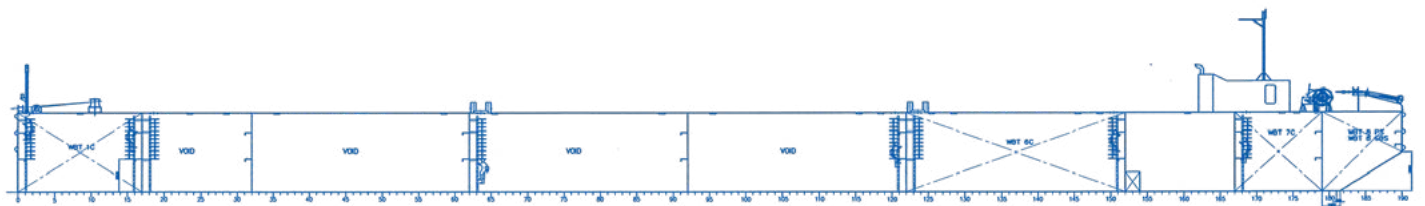
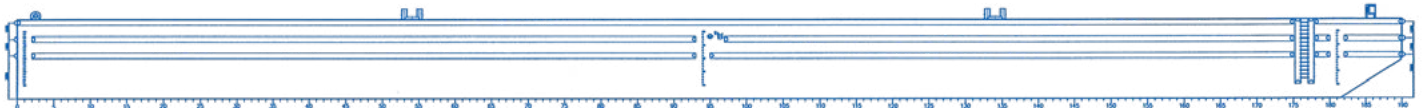
• 9516 Flat Deck cargo barge •



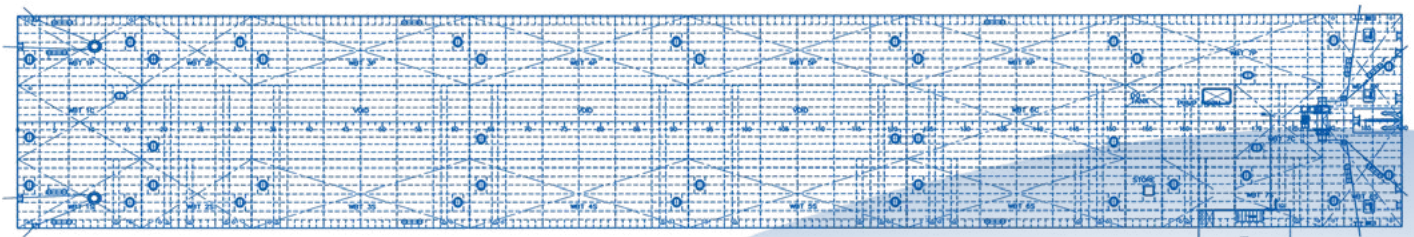
Bow view



Aft view



Side view



Top view

## DIMENSIONS & CAPACITIES

TONNAGE (GROSS/NET):	2515 GRT / 754 NRT
DISPLACEMENT:	7000 t (at fully load)
BALLAST TANK:	19x
BUNKER TANK:	9,66 m <sup>3</sup>
BILGE WATER:	4,70 m <sup>3</sup>

## BALLAST SYSTEM

BALLAST PUMP:	2x 50 m <sup>3</sup> /h, тип AZCUE type driven by DE NANNI type 60 h.p.
BALLAST PIPES & VALVES:	hydraulic type, double remote controlled and operated (ECONOSTO)+manually
BALLAST SYSTEM:	electronic type tanks sounding system (Endress+Hauser)+manually
DE-AERATION:	ventilation heads, inlet / outlet ventilation



## DECK LAYOUT

TOWING ARRANGEMENT:	forechains, steel towing warp, 5x joining shackles, 1x triangle shackle, 3x Smit bracket	MANHOLES:	hatch covers with bolted-type connection
DECK EQUIPMENT:	windlass, 2x mooring capstan, 3x Smit brackets, 12x bollards	HATCHES:	engine room
MOORING GEAR:	2x 50 kN SWL Aft Capstans in the bow, middle and stern on the port side and starboard side	ANCHOR / MOORING SYSTEM:	1x 82 kN WL Windlass, 1x Hall anchor of 2,460 kg with 350 m Steel wire diameter 50 mm, MBL 1334kN
DRAUGHT MARKS:	in the bow, middle and stern on the port side and starboard side	MASTS:	6x navigation lights
CATHODIC PROTECTION:	zinc protectors on underwater hull	RAILING:	removal stays with steel safety railings
		BOLLARDS:	12x double bollards
		FENDERING:	bus system

## EQUIPMENT

DIESEL GENERATOR SETS:	1x 79 kW CUMMINS / Stamford
LIFE SAVING:	3x Lifebuoys, 3x Life jackets
FIFI:	fire extinguisher: 3x CO <sub>2</sub> 3x DP

## DESIGN CONDITIONS

SEA WATER TEMPERATURE:	from -05° C to +35° C
OUTSIDE AIR TEMPERATURE:	from -20° C to +45° C



More than 40 fleet units:

### KPT2500-1C PUSHER TUG

NEWBUILT



3 units  
Multipurpose AHT, Supply Vessels with Ice class 1A

### MB

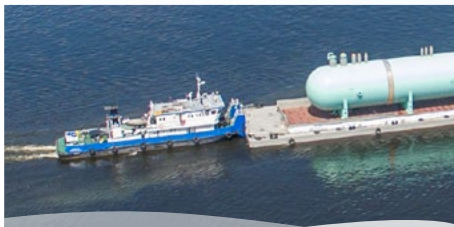
Project 07521



3 units  
Tugs with Ice Class IC

### RT-600

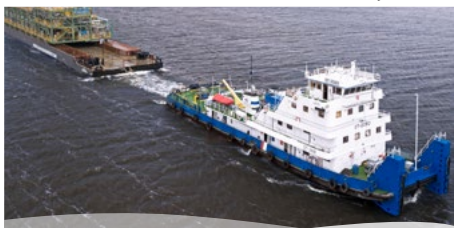
Project 1741AM



1 unit  
Pusher Tug with Ice Class (Ice 10)A

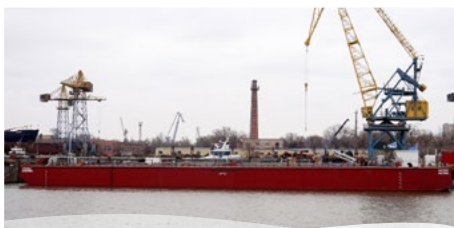
### OT-2000

Project 428.1



1 unit  
Pusher Tug with Ice Class IC

### CHEMBA



1 unit  
Methanol barge

### RORO-PONTOON 6516

Project 6516



1 unit  
RORO-pontoon with Ice Class IC

### ARCTIC



1 unit  
Multipurpose AHT, Supply Vessel with Ice class 1A

### SILVER LOWENNA



1 unit  
Multipurpose AHT with Ice Class ICE

### BTO

Project 81200



3 units  
Pusher Tugs with Ice Class (Ice 30)A

### OT-2400

Project N-3290/3291



8 units  
Pusher Tugs with Ice Class (Ice 20)A

### RORO-PONTOONS

Project 8916



11 units  
RORO-pontoons with Ice Class IC

### RORO-PONTOON GRPN

Project 8516



1 unit  
RORO-pontoon with Ice Class 3

### IEVOLI ORANGE



1 unit  
Multipurpose AHT, Supply Vessel with Ice class 1A

### SOWENA



1 unit  
Multipurpose AHT with Ice Class ICE

### OZERNY

Project N-3180



1 unit  
Pusher Tug with Ice Class IC

### OTA-800

Project 758AM



1 unit  
Pusher Tug with Ice Class (Ice 20)

### RORO-PONTOONS SIMMAR

Project 9516



3 units  
RORO-pontoons with Ice Class ICE

### RORO-PONTOONS 16801



3 units  
RORO-pontoons

@morwennashipping

See all of our fleet on website: [WWW.MWSHIP.COM](http://WWW.MWSHIP.COM)

TEL.: +7 (495) 151-85-20

E-MAIL: [chartering@mwship.com](mailto:chartering@mwship.com)

HEAD Office №20018, Golovinskoe shosse 5-1,  
OFFICE: business center «Vodny», Moscow, 125212, Russia

Morwenna Shipping company LTD.

