



MORWENNA
Shipping Company

Morwenna
Shipping company

www.mwship.com



ABOUT US

Morwenna Shipping Company is a shipowner and operator of a sea and river cargo fleet.

The company's major is transportation of oversized and large-tonnage cargoes by waterways. In addition, the company specializes in towing various types of objects, rents a specialized fleet, offers additional services related to logistic solutions in the industry of oversized transportation and towing.

The company's fleet is represented by more than 60 units, including barges, RORO pontoons, tugs and multi-purpose vessels.

The main areas of fleet operation: Inland waterways of the Russian Federation, the Black Sea, the Sea of Azov, the Baltic Sea, the Mediterranean Sea, the Caspian Sea, the White Sea, the Kara Sea, the Barents and the Pechora Seas and the Caspian shelf of the Republic of Kazakhstan, the northern part of the Atlantic Ocean.

The company's portfolio of services includes such kind of transported cargo:

- project-specific cargo
- oil equipment
- parts of drilling platforms
- wind turbine blades
- plant modules under construction
- other oversized structural elements

The company is open to new projects and sees development prospects in projects of seismic, geological exploration, diving, dredging works.

Our fleet is actively involved in offshore projects, dredging projects, maintenance of PBU and VPU.

In order to develop the most effective logistic solutions, the specifics of the project and the client's requirements are taken into account while solving objectives.

The company is certified in accordance with ISO 9001:2015, ISO 14001:2015 and IQNet standards.

Our company draws a special attention to improving quality and compliance with safety requirements. The company participates in audits from leading oil companies (Chevron) under the OVMSA program (Offshore Vessel Management and Self-assessment). Morwenna's positive ratings based on the results of audits of such a level confirm its professionalism and high reliability.

SERVICES & GEOGRAPHY

The company's key areas of activity are transportation of oversized cargo by waterways, transportation of project cargo, towing of various types and provision of a full range of services related to such work:

- 01 — Comprehensive services for the transportation of oversized, large-tonnage cargo
- 02 — Towing of any complexity, including components of drilling platform constructions and special facilities
- 03 — International transportation of oversized cargo, organization of goods transit and objects through the Inland waterways of the European part of the Russian Federation
- 04 — Preparation and providing of a specialized fleet with ice class and low draft for the project or for rent: tugs, barges, TBS (AHTS)
- 05 — Organization and execution of loading and unloading operations by the RO-RO method, including at unequipped piers
- 06 — Support of offshore operations, maintenance and support of drilling platforms, offshore sector
- 07 — Fleet technical management services for third-party shipowners
- 08 — Development of project and related documentation, coordination with regulatory authorities



The main areas of the company's operation: the Black Sea, the Sea of Azov, the Caspian Sea, the Baltic Sea, the White Sea, the Kara Sea, the Barents Sea, the Pechora Sea, the Mediterranean Sea, the Inland Waterways of the Russian Federation. In 2022, we expanded the horizon of work to the Indian Ocean. In the near future - the Far East.

The company's offices are located on fleet base locations and near the operation areas

**Operation, general management,
commercial
and freight management**

• Moscow

Technical management

• Moscow • Saint-Petersburg

Technical management and vessel maintenance

• Astrakhan • Saint-Petersburg

Crewing

• Astrakhan

Agency port services

• Astrakhan • Aktau • Bautino



The company has extensive experience in the transportation of oversized oil production/exploration equipment, oil rigs, jack-up drilling platforms. Also, the Company provides supporting services for offshore operations on the Pre-Caspian offshore blocks.



ADVANTAGES

Morwenna Shipping Company is a team of professionals with extensive practical experience, comprehensively immersed in the specifics of oversized transportation. Our specialists are providing you high-quality and professional solutions to logistics tasks for the transportation of oversized cargo by sea under your project!

Morwenna Shipping Company has all the necessary documents, licenses and permits to carry out activities related to the transportation of oversized cargo.

The company has the status of a customs carrier and is included in the register of customs carriers of the Russian Federation.

Special attention is drawn to the issues of modernization and renewal of the fleet: new, modern vessels that meet current standards are being purchased (built), the current vessel's complement is being modernized.

The company's towing fleet is represented by the following types:

- New anchor cutters / TBS (AHTS) built at the private shipyard Thecla Bodewes Shipyards in the Netherlands from 2017 to 2019. This tugs line is equipped with a lifting wheelhouse and is used to

push objects with a maximum height.

- Transport and towing vessels-anchor cutters of various capacities from 2200 hp to 4900 hp with ice class.
- Tugs/pushers of Soviet construction – vessels of types OT-2000/OT-2400, MB, BTO, RT, OTA.

The fleet built in the 80-90s was modernized to work in mixed (river-sea) and marine areas. The MB and OT-2400 vessels have been modernized in terms of increasing passenger capacity (up to 12 special personnel on each board).

The company's barges and RORO-pontoons are designed specifically for the transportation of oversized cargo and loading and unloading operations by the rolling method. There is a possibility of modernization for your own project and task. The most company's barges have an ice class and a loading-unloading notation with landing on the ground.



FLEET / SELF-PROPELLED VESSELS



- **Multipurpose Pusher Tugs**

- **AHTS Type**

- **Project KPT2500-1C PUSHER TUG** newbuilt vessels

CLASS NOTATION:

- RINA, C \otimes tug; supply vessel - anchor handling; Unrestricted navigation
- \otimes AUT-UMS, INWATERSURVEY; MON-SHAFT; **PMS** | Ice Class: IC
- + Green+ notation for TREWENNA

PLACE OF BUILT: Netherlands, Kampen, Thecla Bodewes Shipyards

LENGTH: 40,60 m

BREADTH: 13,00 m

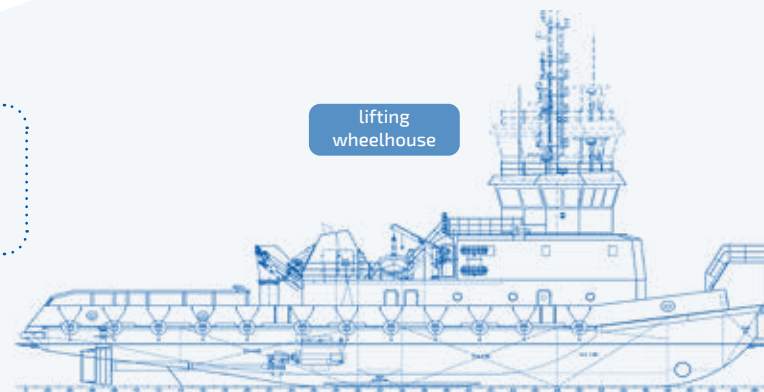
DEPTH: 3,50 m

DRAUGHT: 2,30 m / 2,60 m

POWER: 3450 h.p. / 2x 1268 kW

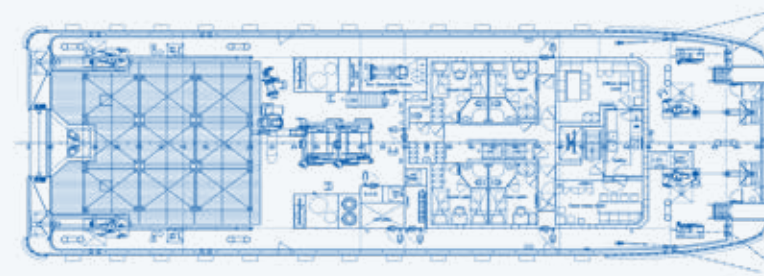
BOLLARD PULL: 39 t

DECK AREA: 140 m²



lifting
wheelhouse

TOP VIEW



SIDE VIEW

VESSELS:

- **WENNA**
- **CONWENNA**
- **TREWENNA**



TREWENNA

YEAR OF BUILT: 2019



CONWENNA

YEAR OF BUILT: 2018



WENNA

YEAR OF BUILT: 2017



ARCTIC

TYPE Tug, AHTS
PROJECT AHT Ice Class IA



CLASS NOTATION: RINA, C \boxtimes Tug; supply vessel - anchor handling; fire-fighting ship - 1 - water-spraying; AUT-UMS | Ice Class: IA

YEAR OF BUILT: 2012

PLACE OF BUILT: Turkey, Altynova

LENGTH: 49,60 m

BREADTH: 16,50 m

DEPTH: 4,50 m

DRAUGHT: 2,50 m / 3,78 m

POWER: 4465 h.p. / 2x 1641 kW

BOLLARD PULL: 46 t

DECK AREA: 313 m²

DECK LOAD: 5 t / m²

IEVOLI ORANGE

TYPE Tug, AHTS
PROJECT AHT Ice Class IA



CLASS NOTATION: RINA, C \boxtimes Tug; supply vessel - anchor handling; fire-fighting ship - 1 - water-spraying | Ice Class: IA, INWATERSURVEY

YEAR OF BUILT: 2010

PLACE OF BUILT: Turkey, Tuzla

LENGTH: 49,98 m

BREADTH: 13,35 m

DEPTH: 3,25 m

DRAUGHT: 2,50 m / 3,78 m

POWER: 4896 h.p. / 2x 1800 kW

BOLLARD PULL: 57 t

DECK AREA: 240 m²

DECK LOAD: 5 t / m²

SOWENA

TYPE Tug, AHTS
PROJECT 36M Tug Boat



CLASS NOTATION:	RINA, C \boxtimes HULL • MACH tug Ice Class: IC
YEAR OF BUILT:	2000
PLACE OF BUILT:	Malaysia, Sibul
LENGTH:	36,00 m
BREADTH:	9,00 m
DEPTH:	4,00 m
DRAUGHT:	2,85 m / 3,25 m
POWER:	2416 h.p. / 2x 883 kW
BOLLARD PULL:	31 t
DECK AREA:	102 m ²
DECK LOAD:	5 t/ m ²

SILVER LOWENNA

TYPE Tug, AHTS
PROJECT Damen Shoalbuster 2609



CLASS NOTATION:	RINA, C \boxtimes TUG, AUT-UMS, ICE, Anchor handling
YEAR OF BUILT:	2007
PLACE OF BUILT:	Netherlands, Hardinxveld- Giessendam
LENGTH:	26,02 m
BREADTH:	9,10 m
DEPTH:	3,60 m
DRAUGHT:	2,50 m / 2,63 m
POWER:	2230 h.p. / 2x 820 kW
BOLLARD PULL:	28 t
DECK AREA:	60 m ²
DECK LOAD:	5 t/ m ²



FLEET / SELF-PROPELLED VESSELS

- Pusher-Tugs
- **BTO** type
- Project 81200

CLASS NOTATIONS:

- RRR, ✕ M-PR 2,5 | Ice Class: (Ice 30) A
- RRR, ✕ M3,0 | Ice Class: (Ice 20)
- RRR, ✕ O2,0 | Ice Class: (Ice 20) A

PLACE OF BUILT: USSR, Zvenigovo

LENGTH: 31,40 m

BREADTH: 10,20 m

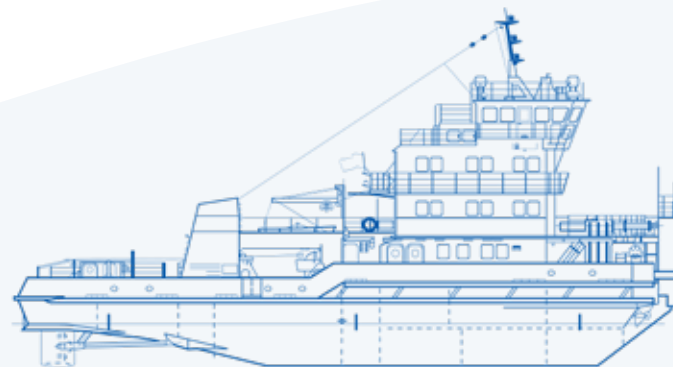
DEPTH: 3,70 m

DRAUGHT: 2,30 m / 2,60 m

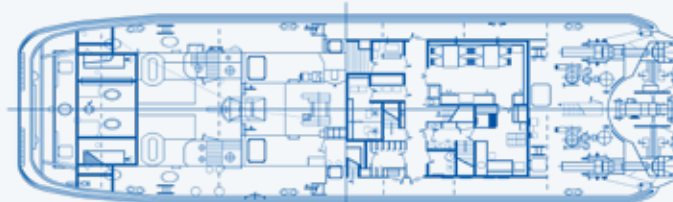
POWER:

- 1170 h.p. / 860 kW
- 1224 h.p. / 900 kW
- 930 h.p. / 684 kW

BOLLARD PULL: 12 t



SIDE VIEW



TOP VIEW

VESSELS:

- GEROY IGOR ASEEV
- GEROY ALEKSANDR SAMOFALOV
- GEROI ZAPOLYARYA



GEROY IGOR ASEEV



GEROY ALEKSANDR SAMOFALOV



GEROI ZAPOLYARYA





FLEET / SELF-PROPELLED VESSELS



- Tugs
- MB Type
- Project 07521

CLASS NOTATION:

• RINA, C ✱ TUG, Special Navigation | Ice Class: IC

PLACE OF BUILT:

USSR, Perm,
Shipbuilding Plant «Kama»

LENGTH:

49,60 m

BREADTH:

10,20 m

DEPTH:

3,50 m

DRAUGHT:

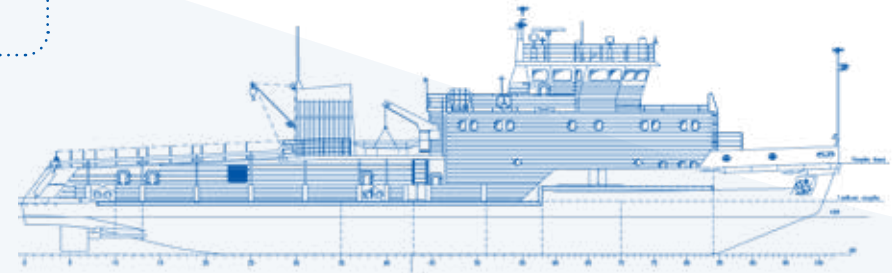
2,20 m / 2,46 m

POWER:

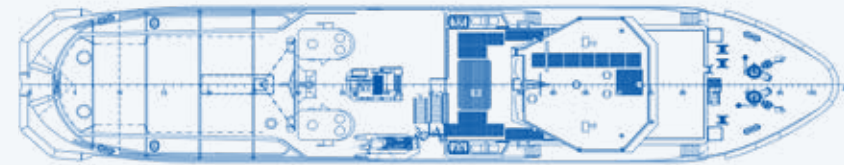
1400 h.p. / 2x 515 kW

BOLLARD PULL:

16 t



SIDE VIEW



TOP VIEW

VESSELS:

- MB-1216
- MB-1220
- KAGUL



MB-1216



MB-1220



KAGUL

MUSSON

TYPE Pusher Tug RT-600
PROJECT 1741AM



CLASS NOTATION: RRR, ❖ O-PR 2, 0 | Ice Class: (Ice 10) A
PLACE OF BUILT: Russia, Tumen
LENGTH: 31,00 m
BREADTH: 8,00 m
DEPTH: 2,70 m
DRAUGHT: 1,48 m / 1,51 m
POWER: 760 h.p. / 2x 290 kW
BOLLARD PULL: 10 t

OTA-903

TYPE Tug, OTA-800
PROJECT 758AM



CLASS NOTATION: RRR, ❖ O-PR 2, 0 | Ice Class: (Ice 20)
YEAR OF BUILT: 1966
PLACE OF BUILT: USSR, Perm
LENGTH: 38,50 m
BREADTH: 8,20 m
DEPTH: 3,50 m
DRAUGHT: 2,00 m
POWER: 800 h.p. / 2x 294 kW
BOLLARD PULL: 10 t

OT-2080

TYPE OT-2000
PROJECT 428.1



CLASS NOTATION: RINA, C ❖ Tug, Special Navigation, Ice Class: 1C
PLACE OF BUILT: Hungary, Budapest
LENGTH: 49,60 m
BREADTH: 11,60 m
DEPTH: 3,30 m
DRAUGHT: 2,00 m / 2,31 m
POWER: 2000 h.p. / 2x 736 kW
BOLLARD PULL: 27 t



FLEET / SELF-PROPELLED VESSELS

• Pusher Tugs

• OT-2400 Types

• Projects N-3290/3291 • 428.1

КЛАССЫ:

- RINA, C ✕ TUG, Special Navigation | Ice Class: IC
- RRR, ✕ M3,0 | Ice Classes: (Ice 20) A

PLACE OF BUILT:

Hungary, Budapest,
MHD Angyalföldi Gyáregysége

LENGTH:

51,62 m / 49,60 m

BREADTH:

12,02 m / 11,60 m

DEPTH:

3,30 m

DRAUGHT:

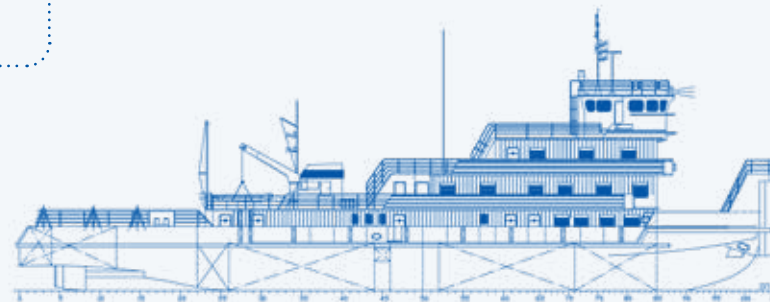
2,25 m / 2,40 m

POWER:

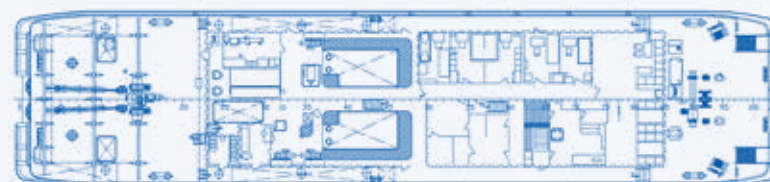
- 2400 h.p. / 2x 883 kW

BOLLARD PULL:

25-29 t



SIDE VIEW



TOP VIEW

VESSELS:

- OT-2410
- OT-2437
- OT-2452
- BOGATYR
- NAVARIN
- VITYAZ
- PALLADA
- IZUMRUD
- OT-2410



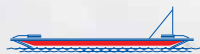
PALLADA



NAVARIN



BOGATYR




FLEET / BARGES & PONTONS



- **RO/RO Pontoons**

- **Project 8916 Damen Stan Pontoons**

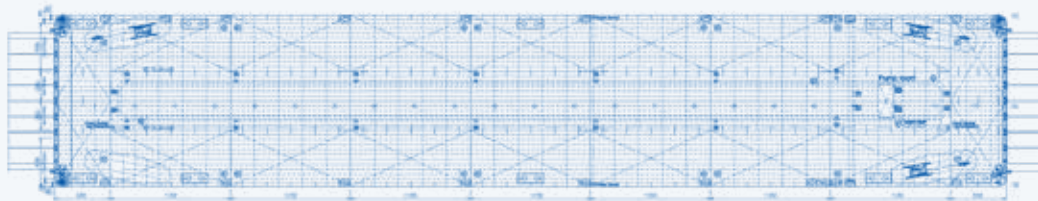
CLASS NOTATION:

• RINA, C  HULL, Pontoon, Unrestricted navigation, STRENGTH BOTTOM, INWATER SURVEY | Ледовый класс: IC

PLACE OF BUILT:	Damen Shipyards / Neptune Marine
LENGTH:	89,25 m
BREADTH:	16,50 m
DEPTH:	4,50 m
DRAUGHT:	0,80 m / 3,00 m
DECK LOAD:	15 t/m ²
CARRYING LOAD:	3000 t



SIDE VIEW



TOP VIEW

VESSELS:

- SILVER-3001
- SILVER-3002
- SILVER-3003
- SILVER-3004
- SILVER-3005
- SILVER-3006
- SILVER-3007
- SILVER-3008
- SILVER-3009
- SILVER-3010
- MORWENNA-3002



SILVER-3001-3007



SILVER-3008-3010




MORWENNA-3002



FLEET / BARGES & PONTOONS

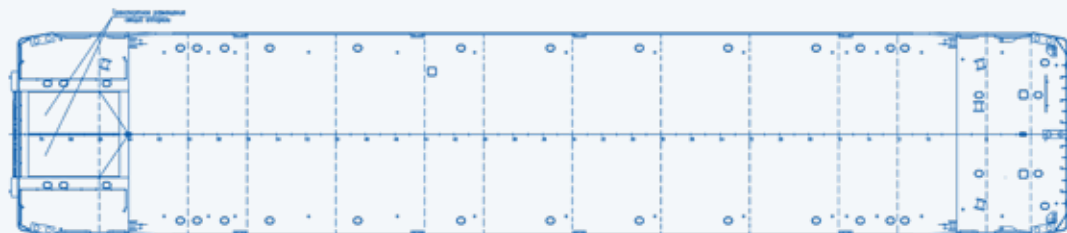
- Barges & RO/RO Pontoons
- Project 16801

CLASS NOTATION: RINA, C  HULL, Pontoon, Special navigation

PLACE OF BUILT: USSR, Kherson
LENGTH: 85,80 m
BREADTH: 16,48 m
DEPTH: 3,30 m
DRAUGHT: 0,65 m / 2,25 m
DECK LOAD: 10 t/m²
CARRYING LOAD: 2200 t



SIDE VIEW



TOP VIEW

VESSELS:

- MORWENNA-1
- MORWENNA-2
- MORWENNA-3



MORWENNA-1
RORO



MORWENNA-2



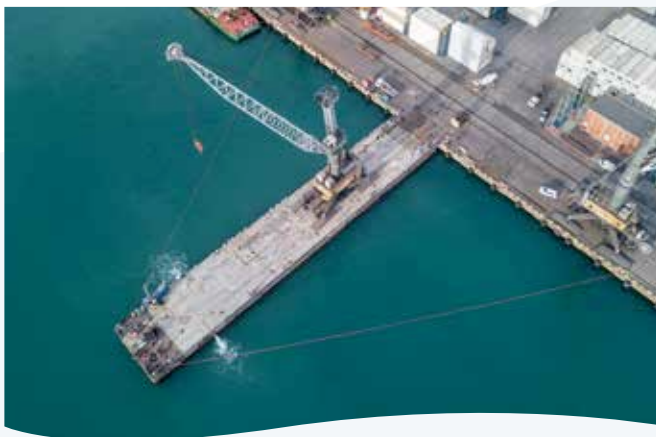
MORWENNA-3
RORO





SIMMAR SUN

TYPE RO/RO PONTOON
PROJECT 9516



CLASS NOTATION: RINA, C \boxtimes Barge-General cargo, Unrestricted navigation, INWATERSURVEY | ICE CLASS: ICE

PLACE OF BUILT: Turkey, Istanbul
LENGTH: 95,00 m
BREADTH: 16,00 m
DEPTH: 6,00 m
DRAUGHT: 0,90 m/ 4,70 m
CARRYING LOAD: 5500 t
DECK LOAD: 10 t/m²

SIMMAR STAR

TYPE RO/RO PONTOON
PROJECT 9516



CLASS NOTATION: RINA, C \boxtimes Barge-General cargo, Unrestricted navigation, INWATERSURVEY | Ice Class: ICE

PLACE OF BUILT: Turkey, Istanbul
LENGTH: 95,00 m
BREADTH: 16,00 m
DEPTH: 6,00 m
DRAUGHT: 4,80 m
CARRYING LOAD: 3400 t
DECK LOAD: 20 t/m²

SIMMAR SKY

TYPE RO/RO PONTOON
PROJECT 9516



CLASS NOTATION: RINA, C \boxtimes Barge-General cargo, Unrestricted navigation, INWATERSURVEY | Ice Class: ICE

PLACE OF BUILT: Turkey, Istanbul
LENGTH: 95,00 m
BREADTH: 16,00 m
DEPTH: 6,00 m
DRAUGHT: 4,80 m
CARRYING LOAD: 3400 t
DECK LOAD: 20 t/m²

MORWENNA-2501

TYPE RO/RO PONTON
PROJECT 6516



CLASS NOTATION: RINA, C, ⚡ Special navigation, STRENGTHBOTTOM | Ice Class: IC

PLACE OF BUILT: Russia, Kostroma

LENGTH: 65,00 m

BREADTH: 16,50 m

DEPTH: 4,00 m

DRAUGHT: 0,65 m / 3,15 m

CARRYING LOAD: 2525 t

DECK LOAD: 10 t/m²

MORWENNA-3001

TYPE RO/RO PONTON
PROJECT GRPN.360



CLASS NOTATION: RINA, C, ⚡ Special navigation, Ice Class: ID

PLACE OF BUILT: Russia, Narimanov

LENGTH: 85,50 m

BREADTH: 16,50 m

DEPTH: 4,50 m

DRAUGHT: 0,80 m / 3,11 m

CARRYING LOAD: 3000 t

DECK LOAD: 15 t/m²

CHEMBA

TYPE METHANOL BARGE
PROJECT CHEMBA



CLASS NOTATION: BV, I ⚡ HULL• MACH , Barge Chemical, Coastal area Caspian Sea with HS < 2.5 m | Ice Class: Young Ice 1

PLACE OF BUILT: Netherlands, Kampen

LENGTH: 69,65 m

BREADTH: 15,30 m

DEPTH: 4,00 m

DRAUGHT: 1,55 m / 2,56 m

CARRYING LOAD: 2032 t / 2200 m³



FLEET / BARGES & PONTOONS

MORWENNA-2001

TYPE RO/RO PONTOON



CLASS NOTATION: RINA, C  HULL; Pontoon, Special Navigation

PLACE OF BUILT: Russia
LENGTH: 68,27 m
BREADTH: 16,50 m
DEPTH: 3,60 m
DRAUGHT: 0,73 m / 2,70 m
CARRYING LOAD: 2040 t
DECK LOAD: 7,70 t/m²
DECK AREA: 912 m²

MORWENNA-2002

TYPE BARGE-PLATFORM





CLASS NOTATION: RINA, C  HULL; PONTOON; CASPIAN SEA

PLACE OF BUILT: Russia
LENGTH: 68,27 m
BREADTH: 16,50 m
DEPTH: 3,60 m
DRAUGHT: 0,73 m / 2,70 m
CARRYING LOAD: 2040 t
DECK LOAD: 7,70 t/m²
DECK AREA: 912 m²

MORWENNA-3601-3608

TYPE BARGE-PLATFORM



CLASS NOTATION: RMRS, K  1 R2-RSN; RMRS, K  1 R3-RSN (MW-3605, MW-3606)

PLACE OF BUILT: Russia
LENGTH: 102,30 m
BREADTH: 16,50 m
DEPTH: 4,20 m
DRAUGHT: 0,84 m / 3,00 m
CARRYING LOAD: 3360 t
DECK LOAD: 7,70 t/m²
DECK AREA: 1488 m²

• Barges • R0/R0 Pontoons



VESSELS:

- MORWENNA-2001
- MORWENNA-2002
- MORWENNA-3601
- MORWENNA-3602
- MORWENNA-3603
- MORWENNA-3604
- MORWENNA-3605
- MORWENNA-3606
- MORWENNA-3607
- MORWENNA-3608





TECHNICAL MANAGEMENT

In order to manage the technical management processes, it is used the software «AMOS», the development of SpecTec and also its own technical management platform. The IT system of technical management enhances control of the technical condition of the fleet, reduce equipment shutdowns, and increase the efficiency of using the company's material resources.

Technical management services:

- Fleet purchase and sale transactions coordination on behalf of the shipowner: inspection of the vessel before purchase, conclusion of contracts for vessel insurance and liability of the shipowner
- Comprehensive control of the technical condition of vessels, preparation of reports on the operability of equipment, mechanisms, organization of technical inspections, dock inspections
- Organization of scheduled and current repairs of vessels, including dock repairs
- Maintenance of vessels in operation
- Vessels supplying with necessary spare parts, equipment, food
- Recruitment of ship personnel, organization of crew change



SIENNA

BOLLARD PULL: 263 t

CLASS:

✠100 A1 Offshore Supply Ship, *IWS Machinery notation
✠LMC, UMS, DP-2, (PCR) Descriptive Note: LI, Shipright (SCM)
SHIPRIGHT (IHM-EU+)

PLACE OF BUILD:

Germany

YEAR OF BUILT:

2004

LENGTH:

90,30 m

POWER:

23500 h.p. / 4x 4320 kW

BREADTH:

23,00 m

DECK AREA:

803 m²

DEPTH:

9,50 m

DECK CARGO:

2500 t

DRAUGHT:

6,20 m / 7,80 m

PASSENGER CAPACITY:

70 people



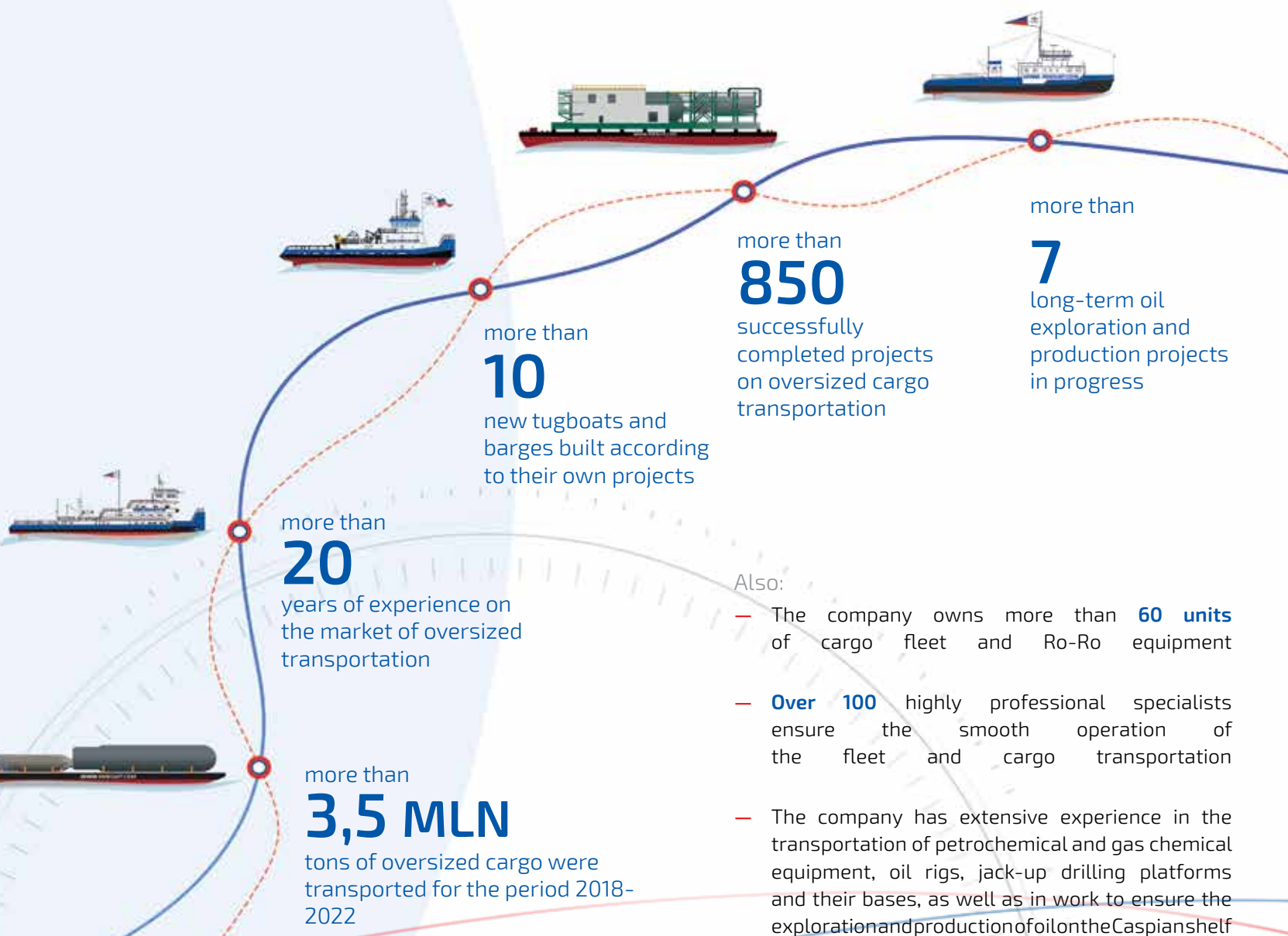
SENARA

BOLLARD PULL: 275 t





COMPANY'S HIGHLIGHTS





Morwenna Shipping Company LTD

5, Golovinskoye shosse, build. 1, room 20018,
Moscow, 125212

Phone: +7 (495) 151-85-20
E-mail: chartering@mwship.com



www.mwship.com

Follow us:

-  mwship
-  morwenna
-  Morwenna Shipping Company

- Heavy Lift & Outsize Cargo Shipments •
- Towages of all types •
- Barges • Pusher & Towing Tugs, AHTS •
- Technical Management •